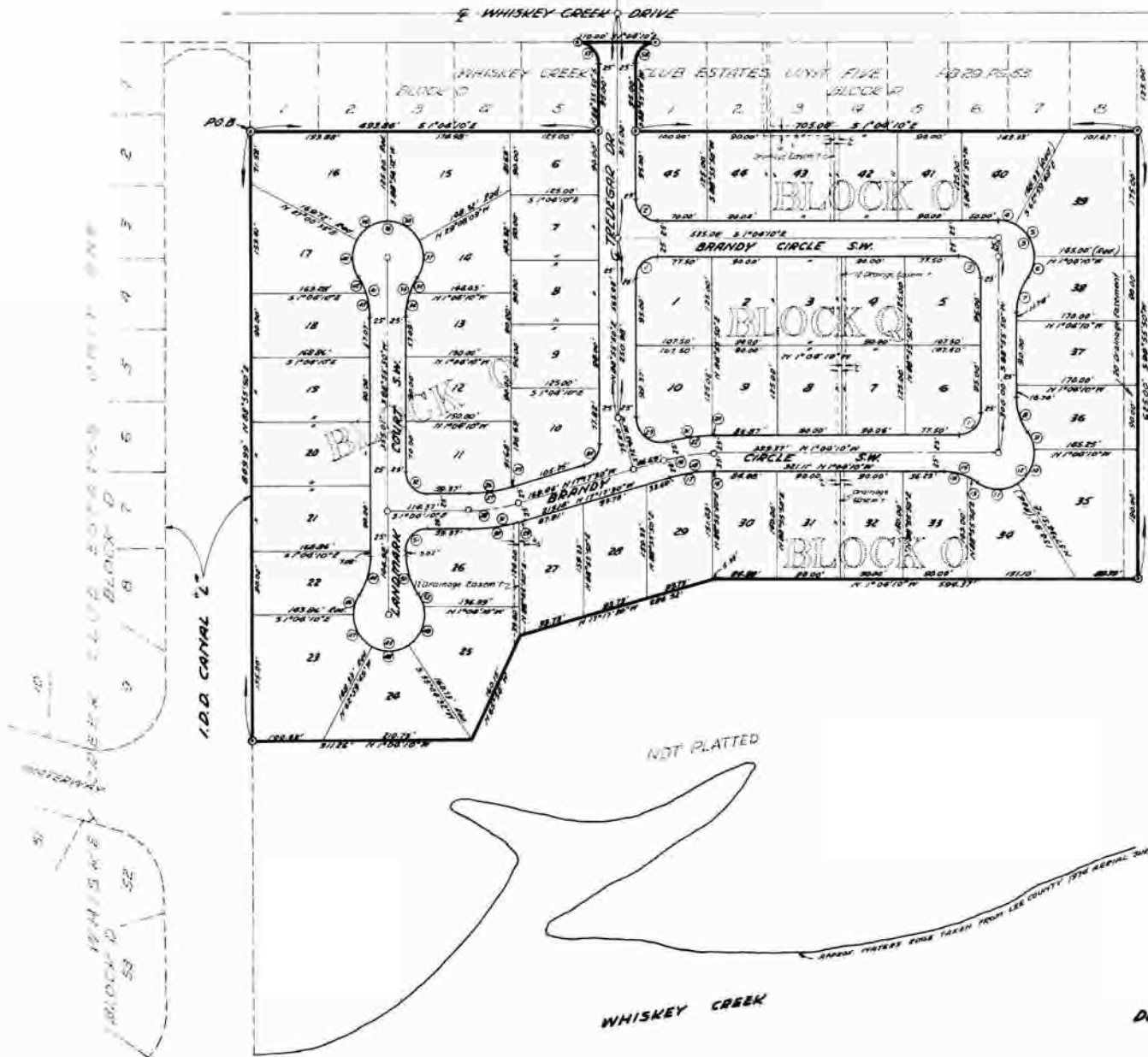


WHISKEY CREEK CLUB ESTATES UNIT TWO

A SUBDIVISION OF PART OF
SECTION 10, T45S, R24E.
LEE COUNTY, FLORIDA.



CURVE DATA

CURVE No.	RADIUS	ARC	CHORD	BEARING
1	30.00	47.12	42.63	N46°20'10"W
2	30.00	47.12	42.63	S47°55'30"W
3	30.00	103.06	89.87	S61°30'06"W
4	30.00	24.50	24.23	S12°59'01"W
5	30.00	54.96	51.65	S17°58'01"W
6	30.00	30.50	30.45	S32°01'47"E
7	35.00	11.54	11.73	N19°21'14"E
8	35.00	32.56	31.73	S21°14'58"W
9	30.00	25.91	25.62	S62°30'00"W
10	30.00	54.78	52.08	N44°24'50"W
11	50.00	58.28	55.03	N47°58'18"E
12	30.00	140.78	98.67	N44°34'10"W
13	35.00	17.84	17.89	S88°21'00"W
14	35.00	30.73	30.49	S10°30'05"W
15	35.00	32.54	31.73	N14°38'06"E
16	300.00	7.12	7.12	S1°48'17"E
17	325.00	28.50	29.42	S3°48'28"E
18	325.00	63.70	63.69	S3°28'50"E
19	350.00	70.78	70.55	N37°30'30"W
20	375.00	77.12	76.81	N36°50'10"W
21	375.00	64.64	64.50	N42°12'00"W
22	375.00	67.71	67.60	N47°03'47"E
23	360.00	63.40	62.57	S48°54'18"W
24	360.00	58.63	58.48	N45°10'00"E
25	325.00	2.82	2.82	N16°58'00"W
26	325.00	61.39	61.40	S3°25'08"E
27	325.00	62.70	62.69	N1°20'00"W
28	350.00	70.78	70.82	N47°30'00"W
29	375.00	5.91	5.91	S14°40'35"E
30	375.00	71.98	71.78	S13°33'25"E
31	375.00	75.86	74.63	S37°00'12"E
32	30.00	69.12	62.43	N44°55'50"E
33	100.00	58.51	57.73	N76°12'27"E
34	100.00	34.39	32.87	S41°57'49"E
35	100.00	25.06	24.83	N69°10'18"E
36	30.00	115.65	83.82	N1°04'10"W
37	50.00	33.78	31.22	S48°18'26"E
38	50.00	54.04	51.49	N47°30'00"E
39	50.00	54.04	51.49	N47°30'00"W
40	50.00	33.78	31.22	S48°18'26"W
41	100.00	58.51	57.73	S74°59'07"W
42	100.00	34.39	32.87	S41°57'49"W
43	100.00	25.06	24.83	S69°10'18"W
44	100.00	58.51	57.73	N76°12'28"W
45	30.00	174.83	88.33	S1°04'10"E
46	30.00	28.28	28.87	N14°37'27"W
47	30.00	30.00	31.45	S1°58'01"W
48	30.00	59.08	57.45	S1°57'49"E
49	30.00	30.39	32.13	S48°12'48"E
50	100.00	58.51	57.73	N76°12'00"E
51	30.00	47.12	42.63	S44°04'10"E
52	30.00	18.29	18.76	N44°34'00"E
53	30.00	47.12	42.63	N47°30'30"E
54	30.00	47.12	42.63	N44°30'10"W



SHEET 2 of 2

DUANE HALL & ASSOCIATES, INC.
CIVIL ENGINEERS LAND SURVEYORS
LAND PLANNERS
FORT MYERS FLORIDA
EST. 1952