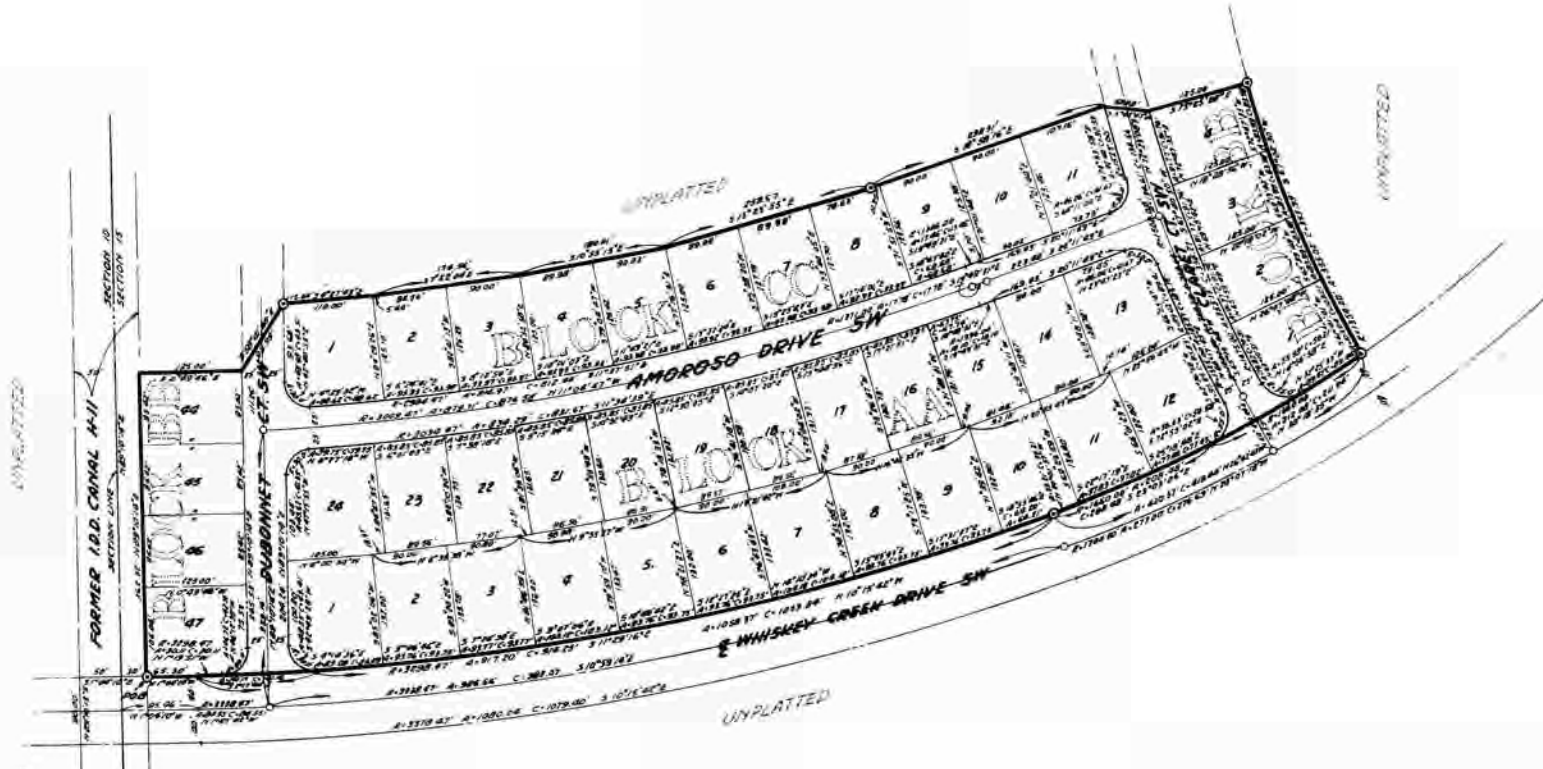


WHISKEY CREEK CLUB ESTATES UNIT NINE

A SUBDIVISION OF PART OF
SECTION 15, T45S, R24E.
LEE COUNTY, FLORIDA.



FORMER I.B.D. CANAL #11

229	229	230	231
232	233	234	235



EASEMENT DEDICATION

There are hereby expressly reserved easements 6 feet wide on each side of line for underground and/or overhead public utilities. Where more than one lot is shown as a building site the outside boundaries of said building site shall carry said easements. In addition, an easement 6 feet wide is reserved along the front and rear of each lot for underground and/or overhead public utilities. All other easements shown on this plat are hereby reserved in perpetuity for the purposes shown.

NOTE:

- ⊙ Denotes Permanent Reference Marker (PRM)
 - Denotes Permanent Control Point (PCP)
- Bearings taken from Whiskey Creek Club Estates Unit Four plat book 30 page 63.

SHEET 2 of 2

DUANE HALL & ASSOCIATES, INC.
CIVIL ENGINEERS - LAND SURVEYORS
LAND PLANNERS
FORT MYERS FLORIDA
CUB 18 702 864