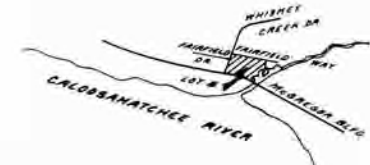
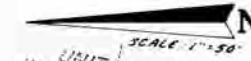
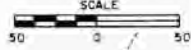
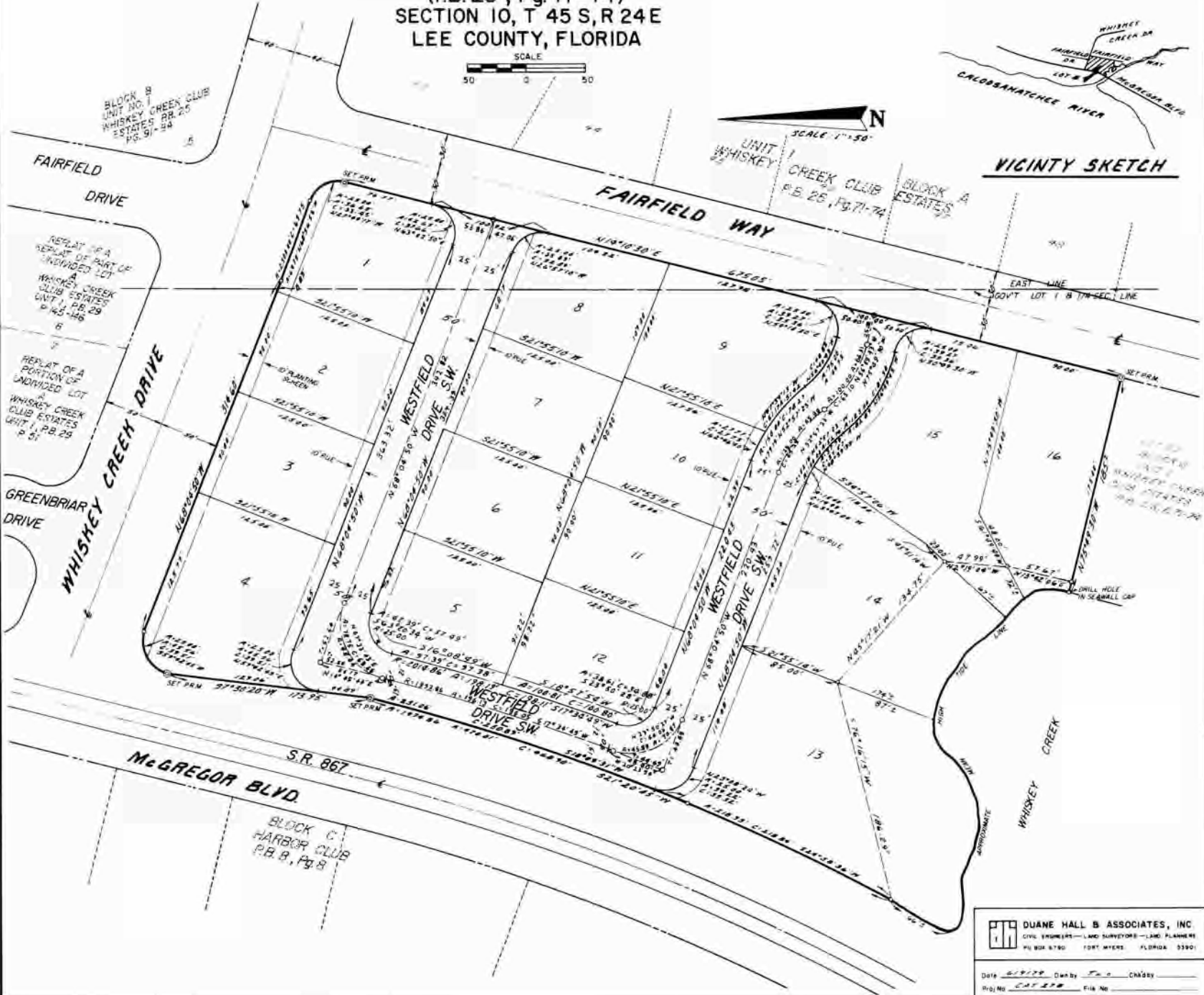


REPLAT OF UNDIVIDED LOT B
 WHISKEY CREEK CLUB ESTATES UNIT 1
 (PB. 25, Pg. 71-74)
 SECTION 10, T 45 S, R 24 E
 LEE COUNTY, FLORIDA



VICINITY SKETCH



BLOCK B
 UNIT NO. 1
 WHISKEY CREEK CLUB
 ESTATES P.B. 25
 PG. 91-94

REPLAT OF A
 PORTION OF PART OF
 UNDIVIDED LOT
 A
 WHISKEY CREEK
 CLUB ESTATES
 UNIT 1, P.B. 29
 P. 145-149

REPLAT OF A
 PORTION OF
 UNDIVIDED LOT
 A
 WHISKEY CREEK
 CLUB ESTATES
 UNIT 1, P.B. 29
 P. 51

UNIT
 WHISKEY
 CREEK CLUB
 ESTATES
 P.B. 25, Pg. 71-74

BLOCK A
 ESTATES

S.R. 86Z
 MCGREGGOR BLVD

BLOCK C
 HARBOR CLUB
 P.B. 8, Pg. 8

DUANE HALL & ASSOCIATES, INC.
 CIVIL ENGINEERS—LAND SURVEYORS—LAND PLANNERS
 P.O. BOX 8780 FORT MYERS, FLORIDA 33901

Date: 5/12/88 Drawn by: J.S. Chabry
 Proj. No: CAT 278 File No: _____