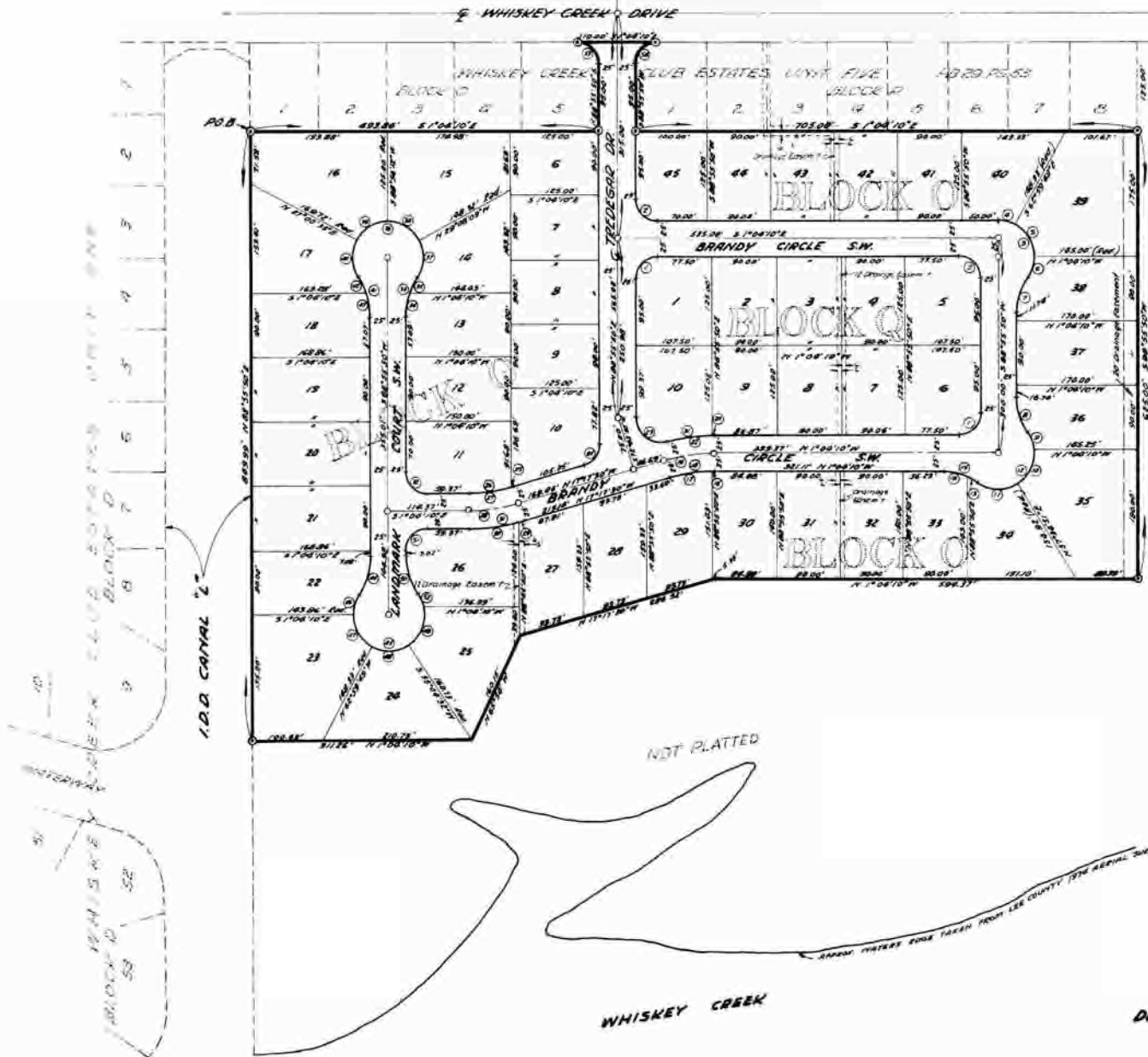


# WHISKEY CREEK CLUB ESTATES UNIT TWO

A SUBDIVISION OF PART OF  
SECTION 10, T45S, R24E.  
LEE COUNTY, FLORIDA.



**CURVE DATA**

CURVE No.	RADIUS	ARC	CHORD	BEARING
1	30.00	47.12	42.63	N46°20'10"W
2	30.00	47.12	42.63	S67°55'30"W
3	30.00	103.06	89.87	S61°30'06"W
4	30.00	242.50	246.23	S12°59'01"W
5	30.00	54.06	57.65	S17°58'01"W
6	30.00	30.50	30.65	S32°01'47"E
7	35.00	12.54	51.73	N19°21'14"E
8	35.00	32.56	51.73	S21°14'58"W
9	30.00	25.91	25.62	S69°30'00"W
10	30.00	54.78	53.08	N68°24'50"W
11	50.00	58.28	55.03	N47°58'18"E
12	30.00	180.78	38.67	N48°34'10"W
13	35.00	17.84	17.89	S88°21'00"W
14	35.00	30.73	38.49	S10°30'05"W
15	35.00	32.54	31.71	N14°38'06"E
16	300.00	7.12	7.12	S74°01'37"E
17	300.00	28.50	39.42	S76°02'08"E
18	325.00	63.70	63.69	S78°50'0"E
19	350.00	70.78	70.55	N37°30'30"W
20	375.00	77.12	77.00	N35°00'00"W
21	400.00	84.64	84.50	N32°12'00"W
22	425.00	92.77	92.60	N29°07'47"E
23	450.00	101.40	101.37	S88°54'18"W
24	475.00	110.53	110.48	S86°10'07"E
25	500.00	120.16	120.05	N16°58'00"W
26	525.00	130.29	130.15	S87°53'08"E
27	550.00	140.92	140.70	N17°00'00"W
28	575.00	152.05	151.82	N14°50'00"E
29	600.00	163.68	163.45	S87°33'58"E
30	625.00	175.81	175.58	S85°00'00"E
31	650.00	188.44	188.21	N14°00'00"W
32	675.00	201.57	201.34	S83°50'00"E
33	700.00	215.20	214.97	N12°50'00"E
34	725.00	229.33	229.10	S83°00'00"E
35	750.00	243.96	243.73	N11°50'00"E
36	775.00	259.09	258.86	S82°00'00"E
37	800.00	274.72	274.49	N11°00'00"W
38	825.00	290.85	290.62	S80°50'00"E
39	850.00	307.48	307.25	N10°00'00"E
40	875.00	324.61	324.38	S79°50'00"E
41	900.00	342.24	342.01	N9°00'00"E
42	925.00	360.37	360.14	S78°50'00"E
43	950.00	379.00	378.77	N8°00'00"E
44	975.00	398.13	397.90	S78°00'00"E
45	1000.00	417.76	417.53	N7°00'00"E
46	1025.00	437.89	437.66	S77°00'00"E
47	1050.00	458.52	458.29	N6°00'00"E
48	1075.00	479.65	479.42	S76°00'00"E
49	1100.00	501.28	501.05	N5°00'00"E
50	1125.00	523.41	523.18	S75°00'00"E
51	1150.00	546.04	545.81	N4°00'00"E
52	1175.00	569.17	568.94	S74°00'00"E
53	1200.00	592.80	592.57	N3°00'00"E
54	1225.00	616.93	616.70	S73°00'00"E
55	1250.00	641.56	641.33	N2°00'00"E
56	1275.00	666.69	666.46	S72°00'00"E



SHEET 2 of 2

**DUANE HALL & ASSOCIATES, INC.**  
CIVIL ENGINEERS LAND SURVEYORS  
LAND PLANNERS  
FORT MYERS FLORIDA  
EST. 1952