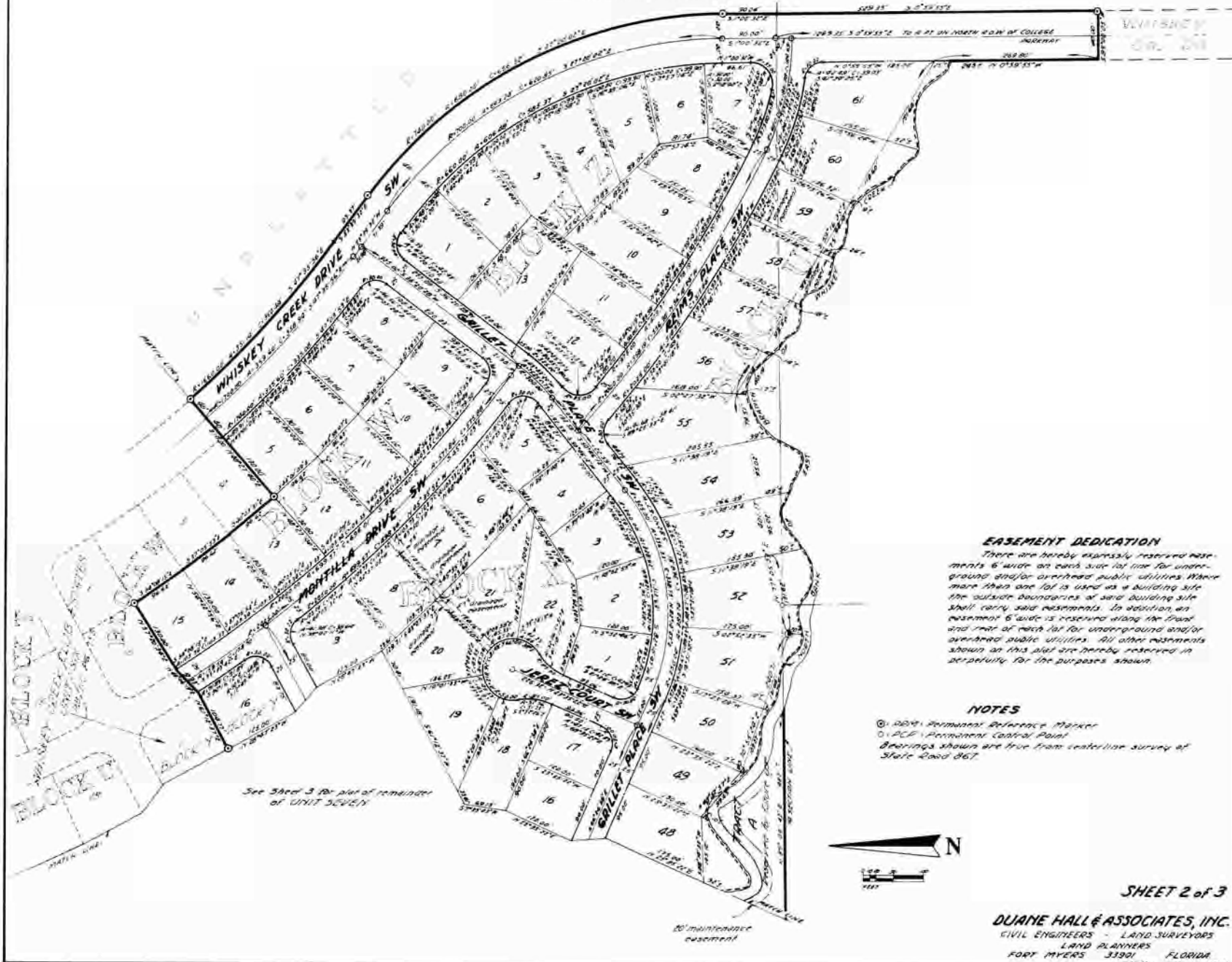


WHISKEY CREEK CLUB ESTATES UNIT SEVEN

A SUBDIVISION OF PART OF
SECTION 15, T 45 S, R 24 E.
LEE COUNTY, FLORIDA.



EASEMENT DEDICATION

There are hereby expressly reserved easements 6' wide on each side lot line for underground and/or overhead public utilities. Where more than one lot is used as a building site the outside boundaries of said building site shall carry said easements. In addition, an easement 6' wide is reserved along the front and rear of each lot for underground and/or overhead public utilities. All other easements shown on this plat are hereby reserved in perpetuity for the purposes shown.

NOTES

- ⊙: IRM: Ironed Reference Marker
 - : PCP: Permanent Control Point
- Bearings shown are true from centerline survey of State Road 867.

See Sheet 3 for plat of remainder of UNIT SEVEN

20' maintenance easement

WHISKEY CREEK CLUB ESTATES UNIT SEVEN

A SUBDIVISION OF PART OF
SECTION 15, T 45 S, R 24 E.
LEE COUNTY, FLORIDA.



SHEET 3 of 3

DUANE HALL & ASSOCIATES, INC.
 CIVIL ENGINEERS - LAND SURVEYORS
 LAND PLANNERS
 FORT MYERS 33001 FLORIDA
 Cell 271-0102